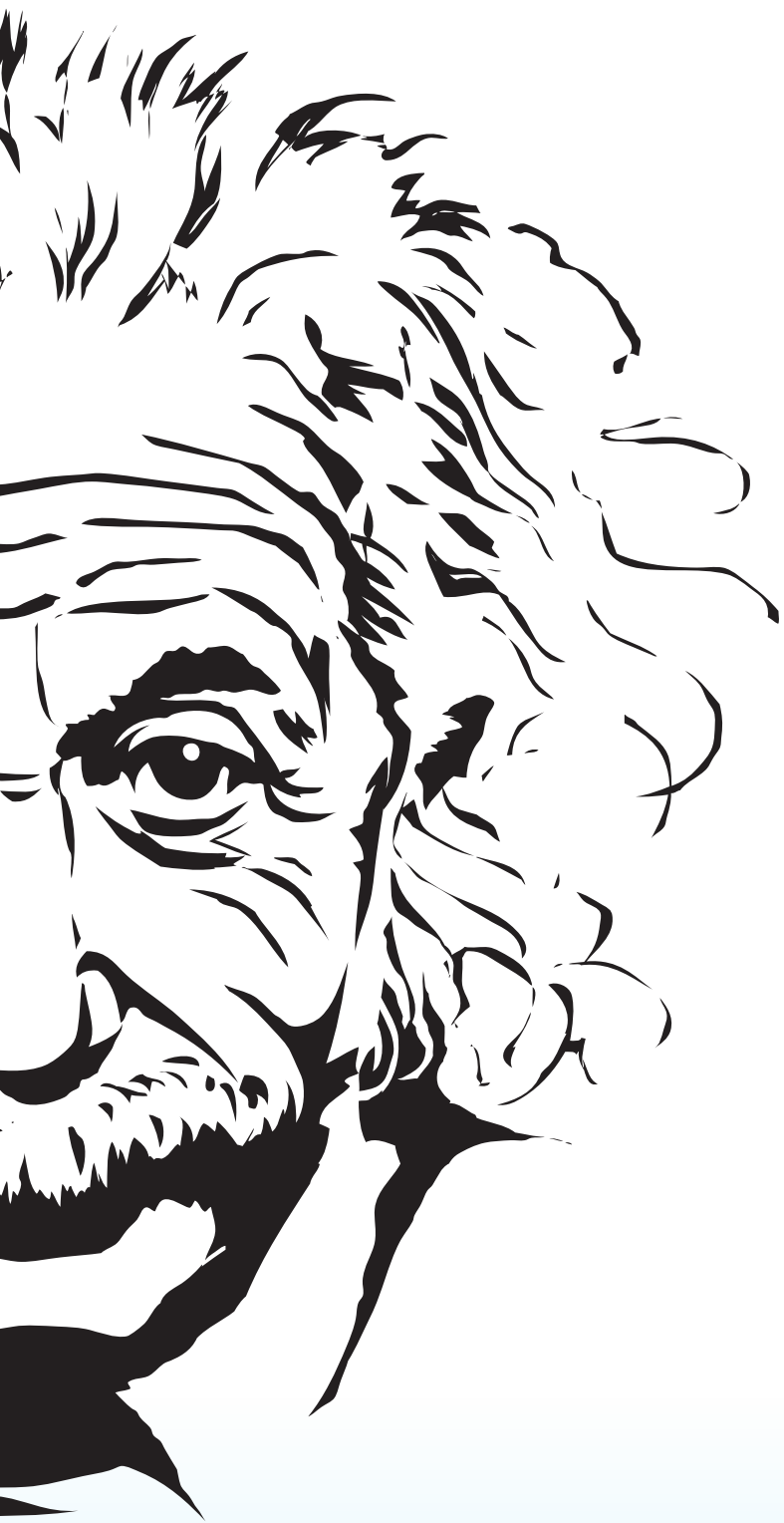


B-TRONIC



B = *clever*

Cleverly made!

The new house automation on radio-control base.

Central, mobile, secure.



BECKER
Together it's easier.

B-Tronic CentralControl

B-Tronic CentralControl CC51

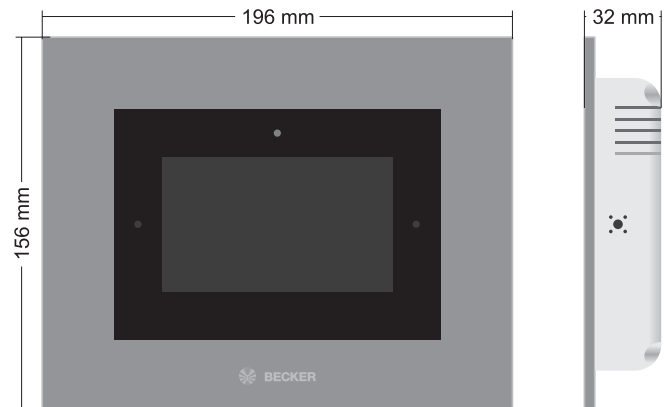
- B-Tronic and Centronic drives controllable
- External Centronic radio receiver, controllable
- Single, group and central control
- For each receiver individually programmable time control including holiday function
- Organisation of receivers, groups and scenarios in rooms
- Rooms can be set up and named individually
- Set up of scenarios
- 4,3" (111 mm) touch display
- Remote control via smartphone, tablet, PC or notebook
- Network integration via LAN/WLAN
- Weather data / Weather forecast
- Webcam can be integrated
- Updates can be downloaded via internet
- Stand up display or wall mountable
- Microphone, speaker, light and camera integrated
- Web client for internet traffic
- Power supply via enclosed mains adapter (100-240V/50-60 Hz)



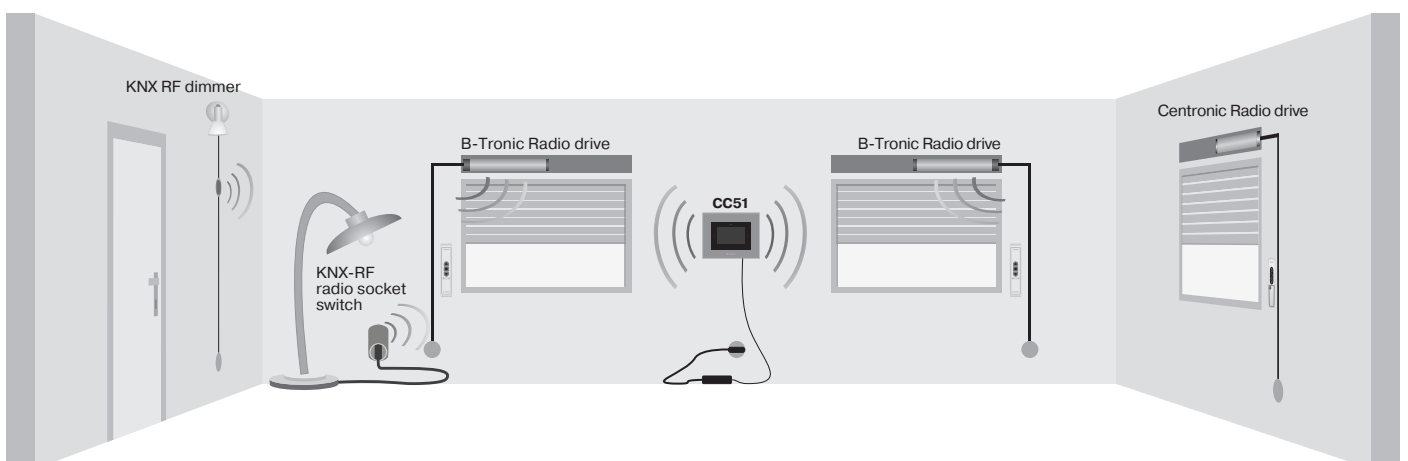
Technical data

| | |
|--|----------------|
| Nominal voltage | 15 to 24 V DC |
| Degree of protection | IP 20 |
| Class of protection | II |
| Radio frequency | 868,3 MHz |
| Permissible ambient temperature | 0 to +55°C |
| Dimensions (w x h x d) | 197x156x33 |
| Item no. | 4035 000 003 0 |

Dimensions



Functional principle – typical wiring diagram



B-Tronic

CentralControl CC31

B-Tronic CentralControl CC31

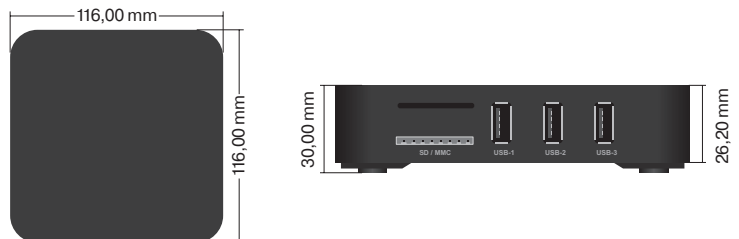
- B-Tronic and Centronic drives controllable
- External Centronic radio receiver, controllable
- Single, group and central control
- For each receiver individually programmable time control including holiday function
- Organisation of receivers, groups and scenarios in rooms
- Rooms can be set up and named individually
- Set up of scenarios
- Visualisation via HDMI or AV at the television
- Audio Out via HDMI and/or 3,5 mm stereo jack
- Remote control via smartphone, tablet, PC or notebook
- Network integration via LAN/WLAN
- Weather data / Weather forecast
- Webcam can be implemented
- Updates can be downloaded via internet
- Web client for internet traffic



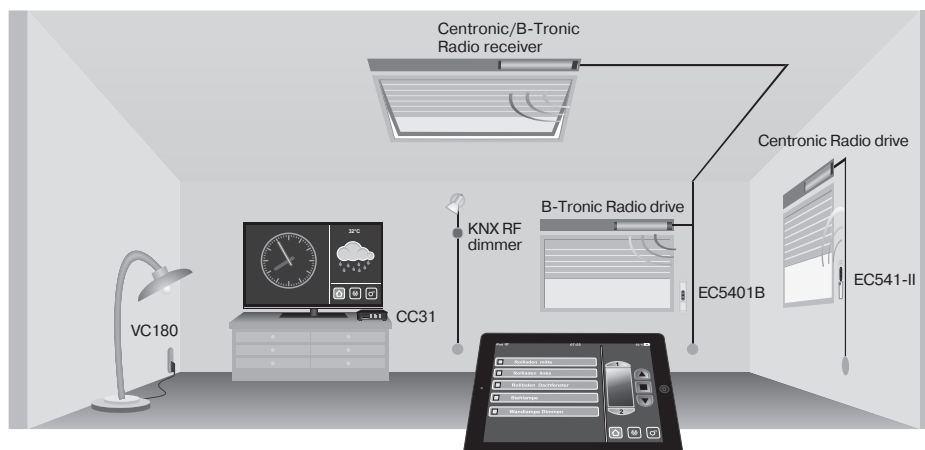
Technical data

| | |
|--|---------------------|
| Nominal voltage | 110-240 V / |
| Wall power supply | 50-60 Hz / 0,4 A |
| Degree of protection | IP 20 |
| Class of protection | II |
| Radio frequency | 868,3 MHz / 2,4 GHz |
| Permissible ambient temperature | 0 to +40°C |
| Dimensions (w x h x d) | 116 x 116 x 30 mm |
| Item no. | 4035 000 006 0 |

Dimensions



Functional principle – typical wiring diagram



B-Tronic handheld transmitter

B-Tronic EasyControl EC5401B

- 3-colour LED for visualisation of receiver feedback
- 2 freely selectable intermediate positions can be programmed
- Slide switch for easy changing between manual and automatic mode
- Up to 30 receivers programmable
- Single, group and central control
- Compatible with KNX-RF radio standard
- Wall bracket

B-Tronic EasyControl EC5415B

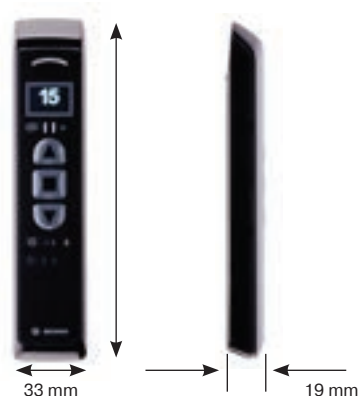
- Big, illuminated display
- 15 channels
- 3-colour LED for visualisation of receiver feedback
- 2 freely selectable intermediate positions can be programmed
- Slide switch for easy changing between manual and automatic mode
- Button for easy setting and starting of up to four scenarios
- Up to 45 receivers programmable
- Single, group and central control
- Compatible with KNX-RF radio standard
- Wall bracket



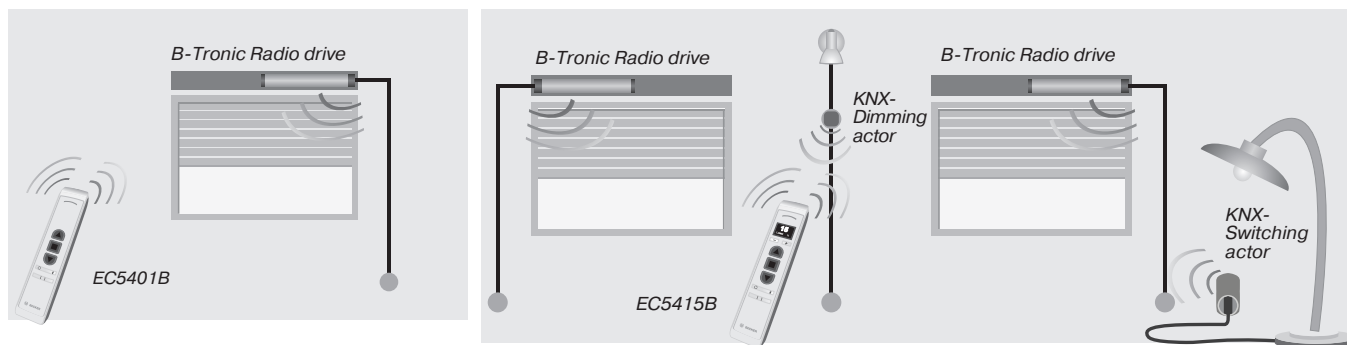
Technical data

| | |
|--|----------------|
| Colour | White/Black |
| Rated voltage | 3 V DC |
| Battery type | LR03 (AAA) |
| Degree of protection | IP 20 |
| Permissible ambient temperature | -10 to +55°C |
| Radio frequency | 868,3 MHz |
| Item no. EC5401B white | 4035 000 001 0 |
| Item no. EC5401B black | 4035 000 001 1 |
| Item no. EC5415B white | 4035 000 002 0 |
| Item no. EC5415B black | 4035 000 002 1 |

Dimensions



Functional principle – typical wiring diagram



BECKER

B-Tronic drives with radio receiver

Drives with integrated bi-directional radio receiver

B01 series

- Position and status feedback as well as repeat function switchable
- Bidirectional radio receiver and memory function integrated
- Automatic programming of the limit positions when using rigid stoppers
- Intelligent installation management
- Sensitive obstacle detection
- Blockage detection in the UP direction
- Anti-freeze mechanism at the top
- Automatic increase of the pressing force with anti-lifting devices
- Dynamic torque adjustment
- Smooth upper stop
- C-Plug
- Ø 45 mm 8 – 40 Nm

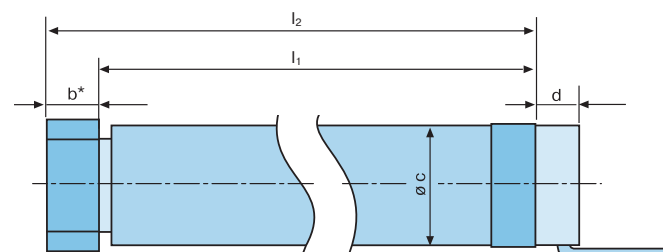


Technical data

| Item code | Item number | Torque (Nm) | Speed (min ⁻¹) | Limit switch region (rotations) | Rated current (A) | Power consumption (W) | Connecting cable (m) |
|-----------|----------------|-------------|----------------------------|---------------------------------|-------------------|-----------------------|----------------------|
| R8-B01 | 2010 520 001 0 | 8 | 17 | 64 | 0,45 | 100 | 2 |
| R12-B01 | 2010 520 002 0 | 12 | 17 | 64 | 0,50 | 110 | 2 |
| R20-B01 | 2020 520 001 0 | 20 | 17 | 64 | 0,75 | 160 | 2 |
| R30-B01 | 2030 520 001 0 | 30 | 17 | 64 | 0,90 | 205 | 2 |
| R40-B01 | 2040 520 001 0 | 40 | 17 | 64 | 1,15 | 260 | 2 |

Rated voltage: 230V AC/50Hz Operating mode: S2 4 min Degree of protection: IP44

| b* | l ₁ | l ₂ | c | d |
|----|----------------|----------------|----|----|
| 40 | 472 | 512 | 45 | 17 |
| 40 | 472 | 512 | 45 | 17 |
| 40 | 501 | 541 | 45 | 17 |
| 40 | 526 | 566 | 45 | 17 |
| 40 | 545 | 585 | 45 | 17 |



* Width of drive adapter of O-S60 (4930 200 222 0). Should another drive adapter be selected measure l₂ will be different

Your customer does have Becker drives already?

Then offer him the upgrading with CentralControl!
You already know how easy the automation of roller shutters can be but with the new house central control for organising, operation and automation of roller shutters and other electric components it get's even simpler!



Do you have any questions? Contact us:

BECKER-Antriebe GmbH
Friedrich-Ebert-Straße 2-4
35764 Sinn
Tel.: +49 (0) 2772 / 507 - 0
Fax: +49 (0) 2772 / 507 - 299



info@becker-antriebe.com



www.becker-antriebe.com



BECKER
Together it's easier.